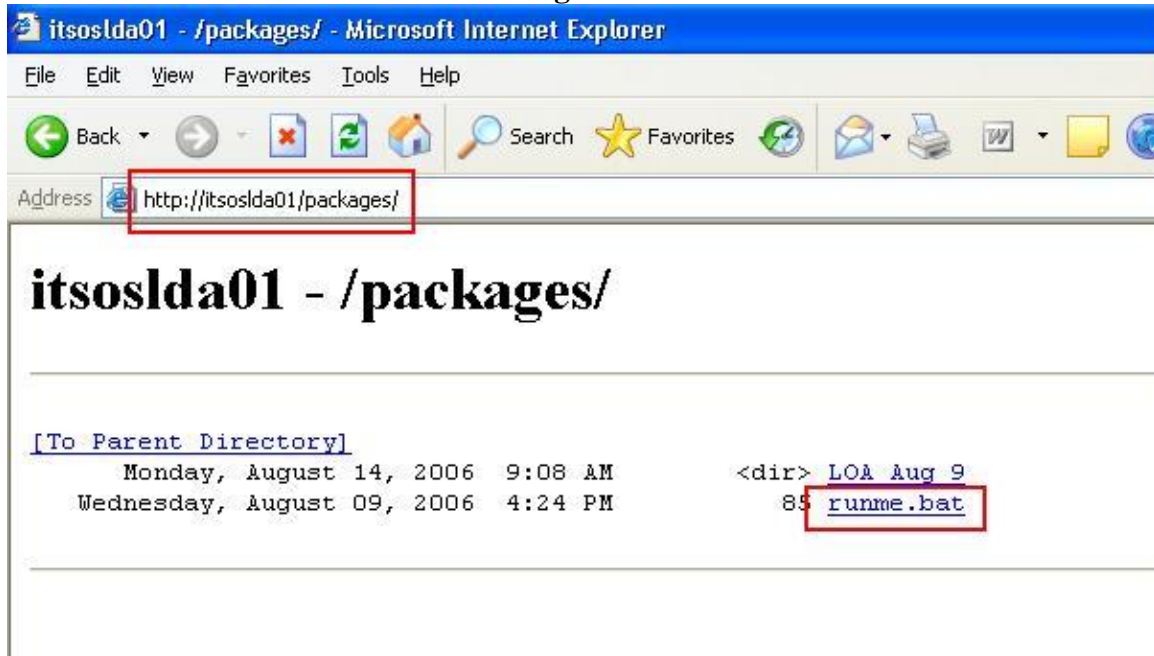


In the event that you are having issues connecting to the Wireless network on campus, please complete the following steps to ensure that your laptop configuration is correct.

First, plug in your network cable while on campus, open up Internet Explorer and type <http://itsoslda01/packages> in the address bar. Once the page has finished loading, click on **runme.bat** as circled in figure 1 below.

Figure 1



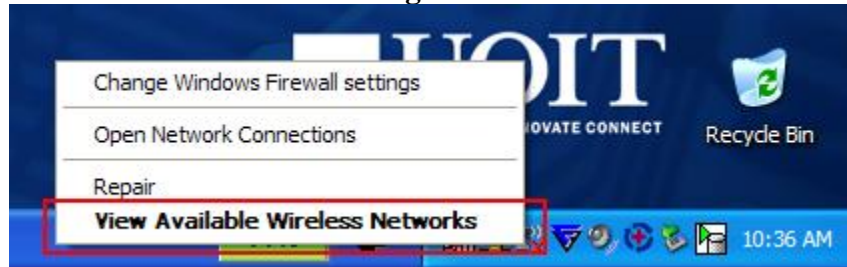
You will then be presented with a security dialog box as shown in figure 2. Click on **Run**, close Internet Explorer and reboot your laptop.

Figure 2



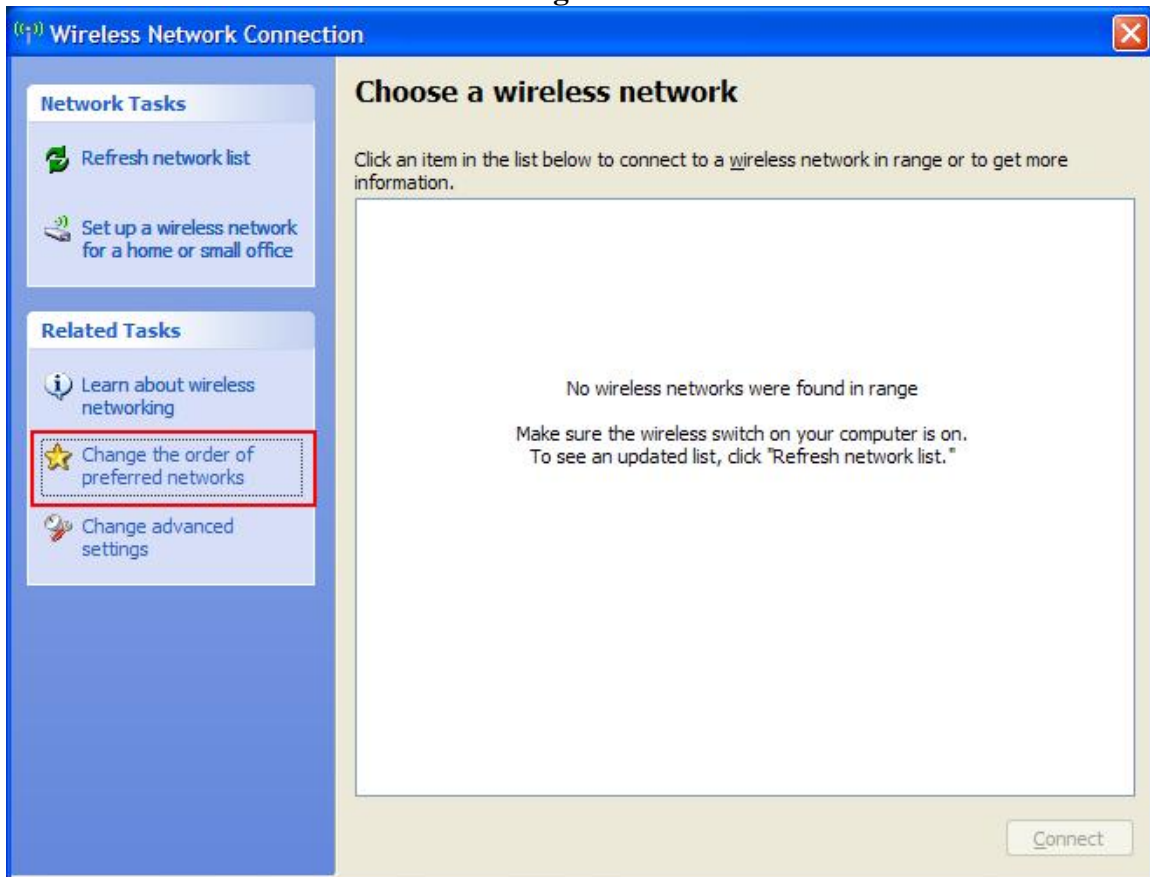
Once you have rebooted your laptop and logged back in, right-click on your wireless icon in the bottom right corner and select **View Available Wireless Networks** as shown in figure 3.

Figure 3



Next click on **Change the order of preferred networks** as shown in figure 4.

Figure 4



In figure 5 you will click on Add and make sure that your settings match what is shown in figures 6 and 7.

Figure 5

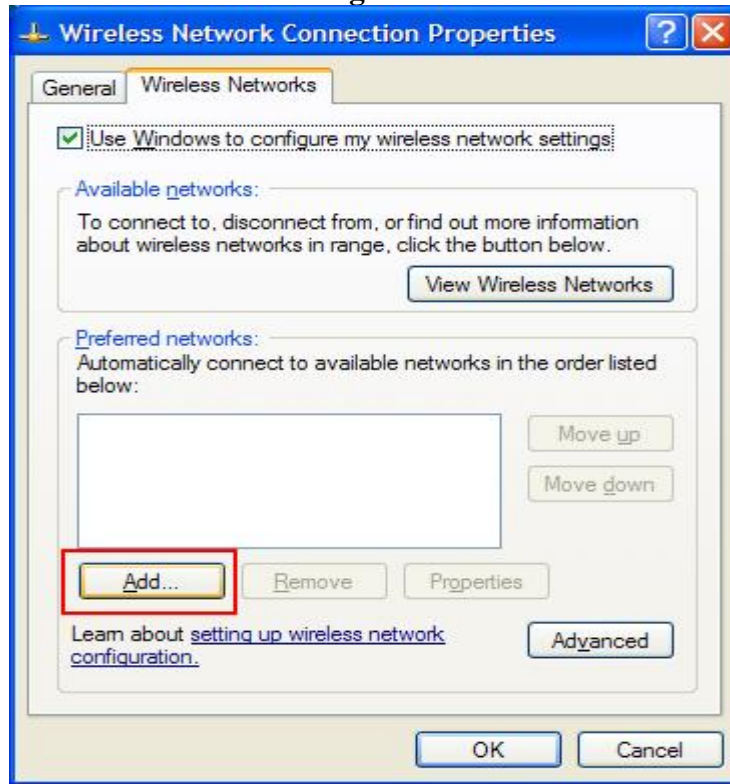


Figure 6

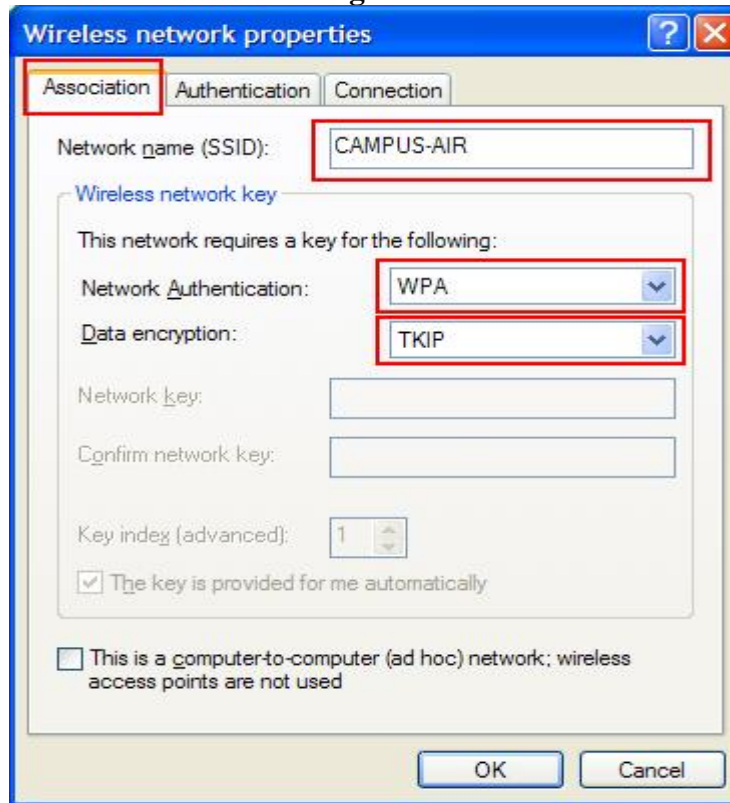


Figure 7



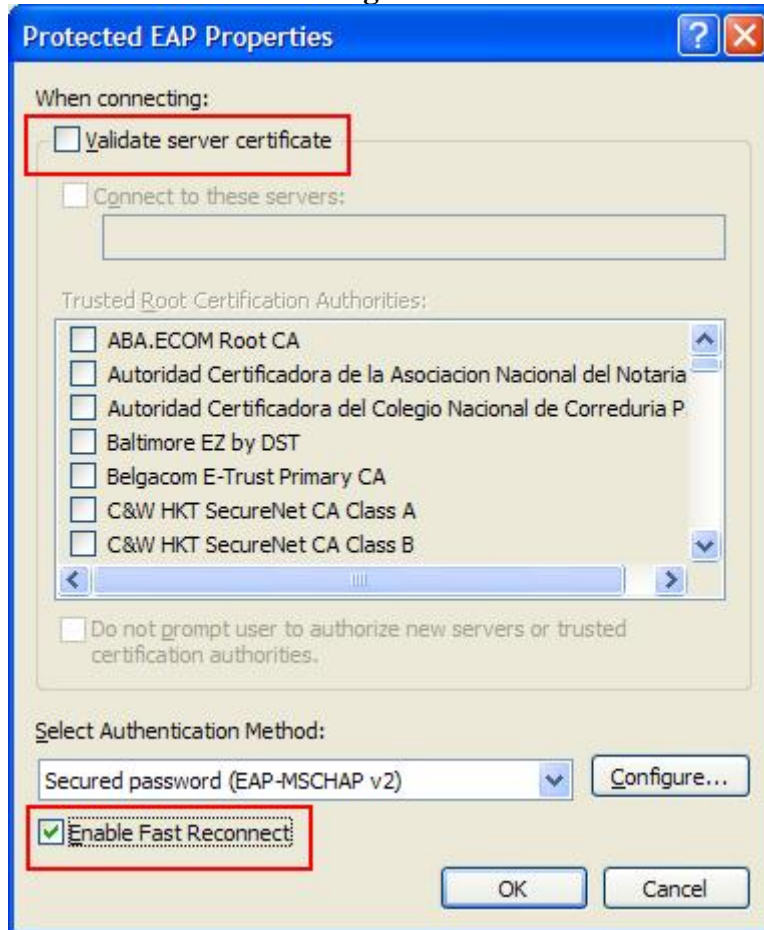
While still in the Authentication tab as in figure 7, click on **Properties** as shown in figure 8 below.

Figure 8



Make sure that your laptop matches what is shown in figure 9 and then click on **Okay** until you are back on your Desktop.

Figure 9



Unplug your network cable and if your laptop doesn't automatically connect to the wireless network, left click on the Access Connections icon in the bottom right corner of your desktop, select **OnCampus**, and then **Connect** as shown in figure 10.

Figure 10

